

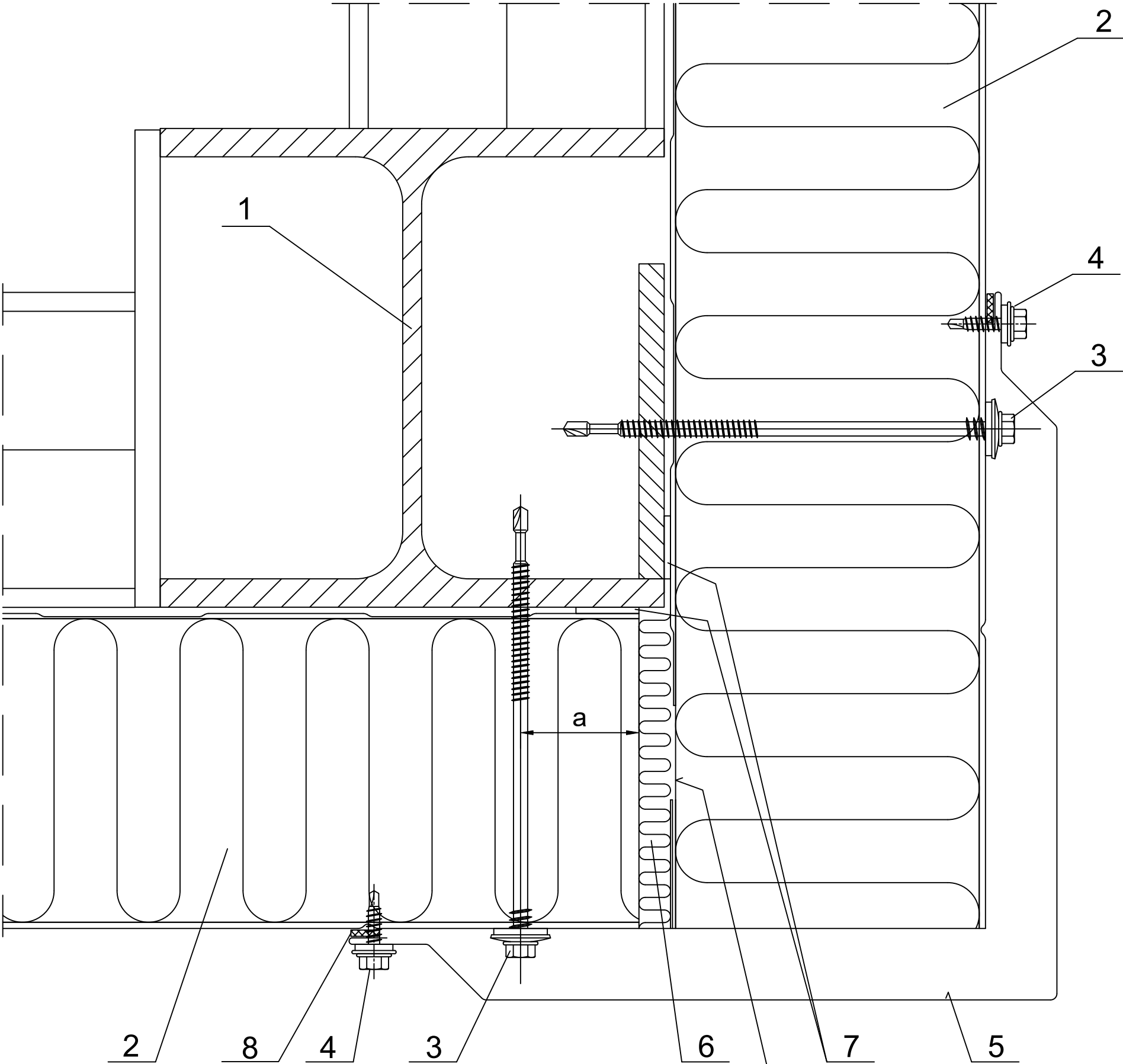


Contents of drawing

Fixing of Ruukki nSPD WE
with corner steel column.

Vertical panel arrangement.

Date	Rev. date	Work nr.	Drw. nr.	Rev.
Drawn by Ruukki	Rev.	M35/S04	-	
Scale 1:2	Building	File nr. P2021/001-00036		



optional facing gap
~30 mm

- 1. Steel column acc. to engineering design of the structure.
- 2. Ruukki nSPD WE.
- 3. Panel fastener for hot-rolled steel column or for cold-bentsteel column.
- 4. L03 fastener (every 500 mm).
- 5. EA1B28 corner flashing.
- 6. Loose mineral wool.
- 7. 4x20 PE self-adhesive sealant.
- 8. 2x10 PE self-adhesive sealant.

panel thickness [mm]	min. distance from the panel edge "a" [mm]
< 150	30
≥ 150	40

* for structures with high requirements regarding thermal insulation facing gap is ~30 mm